



BCR 2000 to REAPER



Mackie Control Emulation + BCR2k Version 1.0 – manual 12.29.08

Table of Contents

Introduction	2
What is this for?	2
* Features – Version 1.0	2
Installation	4
PC –	4
OSX –	4
Reaper – Setup	5
Start up order is important	5
Usage – try it and you will understand	5
Control descriptions	5
Faders	5
Mute/solo/Arms/go2Marker#	6
Pans	6
JOG wheel – does what you think it will	6
Transports	6
Other controls	6
Don't forget the 2 foot switches	7
*Preset arrow keys	7
Tips for this preset	7
Tips for Bcmanager	7
Final thoughts	8

Introduction

This bcr2000 preset (sysex file) was created by me using [Bcmanager](#), for REAPER

It is mackie emulation designed for REAPER, however, it is not a complete emulation.

It is based on extensive work from [Namihei](#) and others at the [Abelton Live forum](#). Many thanks to all their hard work.

What is this for?

This preset will turn your cheap BCR2000 into a really nice, *almost*, full Mackie Control Emulation for controlling REAPER.

It *will* increase you productivity significantly and get your hands off the mouse/keyboard.

Try it, you have nothing to loose, except 1 preset slot on the BCR2000. Functions and usage are explained below.

* Features – Version 1.0

This preset *will* **overwrite 0 preset** – Always back up your presets *before* playing with this. You have been **warned! You will have to store it where you like.**

- *1 preset*
 - *8 Faders on the top row of encoders with leds showing fader position.*

This preset will eliminate fader jumps if used according to directions.

- 1 Master fader
- 8 Pans on the 2nd row of knobs down leads not working (see layout image further down)
- 8 Mutes, solos, arms and go2markers.
- Jog wheel
- < Bank > switches between 1-8 tracks, 9-16, 17-24 ... $n - (n+7)$
Really! From those 8 knobs you can bank down to control as many tracks as you want/have. If you do have a lot, you may want to use *huskervu* (google it) to keep track of what bank you are on...
- Much much more see below.



- What is does not do that my Ableton Live preset does.
 - No vpots, only pans.
 - No 8 Device pots (dpots) – Great work Stefan_soundstudies from yahoo.
 - No 8 new knobs that are the native REAPER support for the BCR2000, this might be added in the future.

- *No Clip_fires.*

Installation

Send the sysex file to the BCR2000.

- BCR2000 – Mode U1, is what I use, check your bcr manual for help on that.
- This file will **overwrite** *preset # 0* on the BCR2000. Make sure you back up all your bcr2000 presets before sending this file. *You have been warned twice!*
- Send “Bcr_reaper_ver1_0.syx” to the BCR2000 using your favorite sysex librarian or my favorite editor BCmanager. When you send the file, you will see the BCR's lights dance.
- You might have to hit the preset button (bcr2000 button) up or down 1 then come back use the preset.
- If you like it you will have to use the store button to store it to the preset you like.

PC –

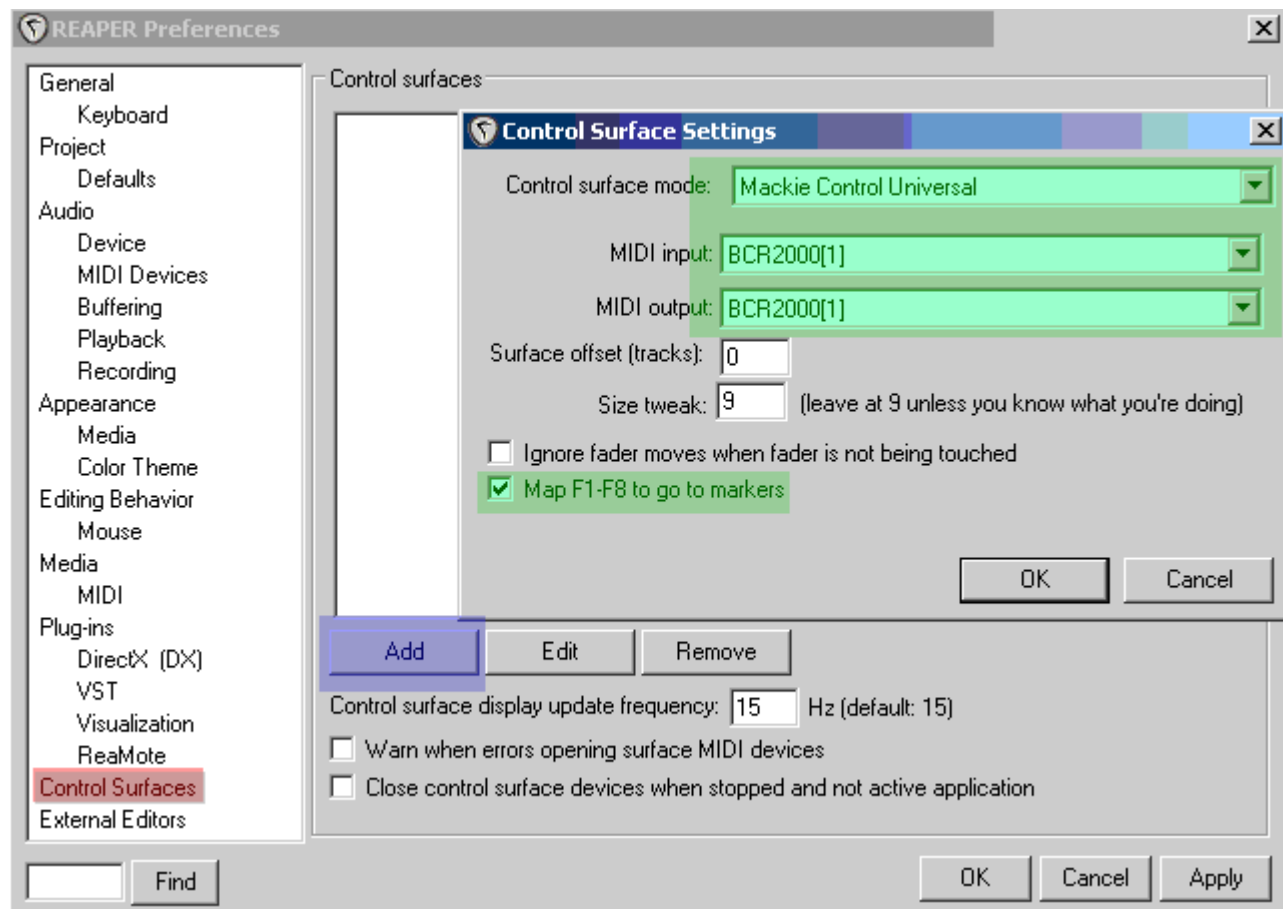
- You don't need midiyoke unless you want to use huskervu.
- You can also use, and I strongly recommend, Bcmanager, see link above, to transfer the file.

OSX –

I don't run a mac, good luck. Here are some sysex options, I have not tested any of them.

- [SysEx Librarian](#)
- <http://opuslocus.com/forums/viewtopi...fa614bfeb0bbe8>
- [Debehinger 1.0](#)

Reaper – Setup



Setup - options>preferences>control Surfaces. Settings like above.

Set up for Reaper is pretty straightforward. (see above screen shot)

Start up order *is* important

Always boot the BCR2000 1st, then start Reaper. Otherwise, it won't have the BCR2000 ports listed.

Usage – try it and you will understand.

< Bank > - Remember that while it seems like you only have control over 8 tracks, you have many many controls from the same set of knobs.

Control descriptions

Faders

Top row of knobs = control the level of the tracks – 1-8, 9-16, 17-24 ... etc (depending on bank button status).

- **Flip** – When flip has been pushed the **vpots** and **faders** switch places
- Be aware of that if **faders** are not doing what you expect.

Master – the master fader is located on the bottom row from the top of knobs next to Jog. Master only controls the master level, never, anything else.

Mute/solo/Arms/go2Marker#

(4 encoder group buttons top right) Look at the screen shot again of the layout of this preset to make sense of this.

- **Each of the 8 faders has can be pushed, as a button function.**
- If **encoder group #1** button (MUTES) is active then these buttons become **mutes** for each track 1-8 (unless you have more tracks and use the bank buttons from above they will follow).
- **Solo hit the solo button** = faders pushes are now solos. **V-select** work the same way.
- If you want to **mute** multiple tracks or **solo** multiple tracks you need to press and hold **CONTROL** while pressing the faders you want armed or soloed.
- **Arms** – push the button to arm a particular track, ctrl + arm will let you arm multiple tracks.
- **Go2Markers** - This control will turn the fader pushes into go 2 marker 1 – 8. These won't do anything unless you have markers set!

Pans

*There are no **VPOTS** (if you don't know what this means, don't worry) reaper does not support more than the pan function of the vpot.*

- **Pans** – each vpot controls pan by track. Pan1 = pan on track 1.
 - If more than 8 tracks – **< Bank > (rotary switch)**.
 - **Banks** – are in sets of 8, 1-8, 9-16, etc..
 - No limit.
 - Clockwise turn of the bank knob will go out, 9-16 then 17-24... etc.
 - Counterclockwise turn of the bank rotary switch (knob) will come back, 17-24 then 9-16, then 1-8. Visual feedback from LCD emulation, like huskervu may be necessary to know where you are. I don't use it with Reaper.

JOG wheel – does what you think it will.

Transports

Transports are at the bottom right set of buttons is pretty self-explanatory. **Note – no rewind or ff (yet)..., sorry.*

Other controls

Some controls have not been mentioned up to this point

- Shift
- Option button – some functions already mentioned above. Other functions not known at

this time...

- Control button – Press and hold control to multiple arm or multiple solo tracks. Other functions not known at this time.
- Alt.

Don't forget the 2 foot switches

- **#1 Play** – if the track is armed this will begin recording so hands free trigger. This is nice for guitar or bass.
- **#2 undo.**

****Preset, edit, exit and store buttons remain available.***

These controls are not altered so, you can switch quickly (almost instantly), between BCR2K presets as well as store edit or exit.

Tips for this preset

You don't have to use it, however, I think you will like it.

- Play with it.
 - Open some project you are not worried about, to get used to using this preset.
 - Maybe, print out the above image to look at
 - Make labels so you can just look and go. (I use artists low tack tap and write names on that tape)
 - Bcmanager, will print labels!
 - I have not done so, so I can't tell you how well it works.
- RTFM (oh wait, if you got here you already have) Nice work!
- Make sure you understand about the <**BANK**> controls.
- If you don't like it you can always go back to just having faders, the stock “all controls” for *Bcf2000*(yes I said bcf) and Reaper (I don't actually know what this does yet).
- You can still change presets on the fly like if you are working with a softsynth or some vst you have mapped.
- If you want to change the layout, just use bcmanager to work the file the way you want, then save and send it back to the bcr2000 and you have customized it yourself. It is pretty easy with bcmanager. Please post your reworks to the bc2000 yahoo group. Share and share alike.

Tips for Bcmanager

- Use it, you will love it.
- You can move controls where you like with bcmanager (see link at the top of the page). I strongly encourage you to download that program to make this controller do what you want. You can copy and paste, set ranges, do all kinds of fun things. I guess you know, I like bcmanager.
 - Beware tho, when you first use it you may accidentally overwrite all your presets. I did this. Back up before you begin.
- The file included here is 2 presets.
 - Get used to bcmanager for a little bit before sending this file.
 - You can dump your bcr to bcmanager and save it. Bcmanager will request the dump, no

- need to touch the bcr besides turning it on and routing midi.
- You could then open the .syx file included here with bcmanager, highlight just that preset and click send from the preset window, **not send all to bcr**, just that one preset.
- Remember it will overwrite preset #21 and 22.

Final thoughts

If you are opening this, then you have a BCR2000.

I cannot stress how flexible this controller is and the how easy it is to edit presets using bcmanager.

UPDATE -

Users on the bcyahoo group keep coming up with new uses of this great controller.

I have, in fact, also created a sysex editor for an old synth that works great. No more nested menus to adjust new patches for my old VFX.

If you have a pc then you must go to the [bc2000](#) yahoo group. Mark and Royce have created some excellent editors for the pc. No more, buggy java editor from the company. The wealth of information on the controller and it's flexibility is well documented by Mark and Royce. Go join and learn.

Best of luck.

genmce@yahoo.com